

MMYB

Marcello Maggi Yachting Boutique

RARITY



RARITY

SPECIFICATIONS

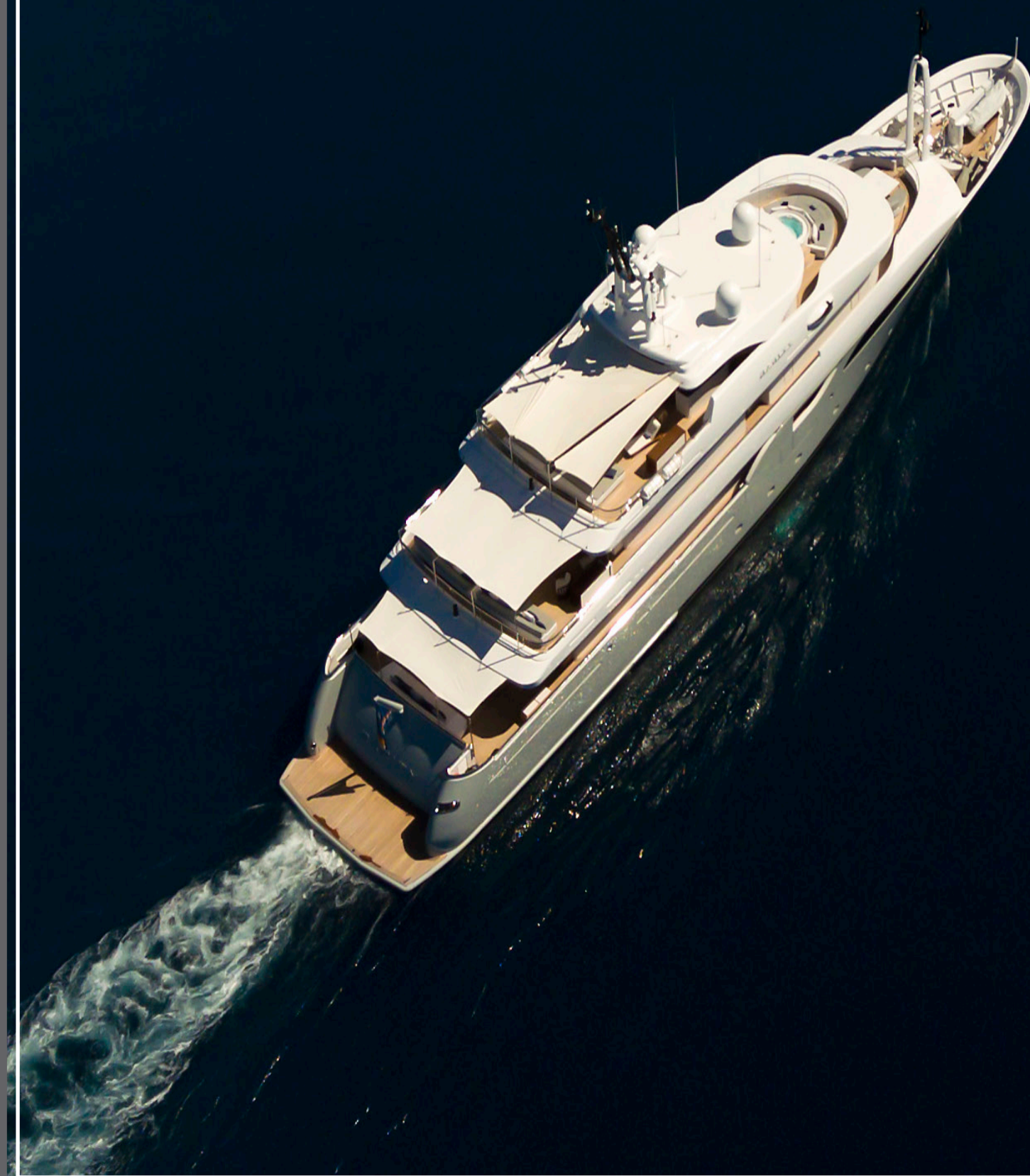
Built by	Rossi Navi
Length	55m (180' 4)
Beam	10m (32' 8)
Draft	3m (9' 10)
Year	2008 (0)
Gross tonnage	736t
Material	Steel & Aluminium
Engines	2 x CAT 4462HP
Speed	15,5 knots (approx)
Accommodation	12 guests in 6 cabins
Crew	12
Location	Italy
Price	
Tax Status	EXCL VAT [Not for sale to US residents while in USA waters]



MMYB

Marcello Maggi Yachting Boutique

RARITY



INDEX

1. CONSTRUCTION
2. MAIN CHARACTERISTICS
 - General
 - Capacities
3. MACHINERY
 - Generators
 - Electricity
 - Air Conditioning
4. ACCOMMODATION
5. GALLEY & LAUNDRY EQUIPMENT
6. COMMUNICATION, NAVIGATION & ENTERTAINMENT EQUIPMENT
 - Communication Equipment
 - Entertainment Equipment
7. DECK EQUIPMENT
8. REFIT HISTORY
9. COMMENTS
10. EXCLUSION
11. GENERAL ARRANGEMENTS
 - 11. PHOTOGRAPHS
 - Interiors accomodation
 - Exteriors arrangements

1. CONSTRUCTION

Steel Hull with Aluminium Superstructure Teak decks

2. MAIN CHARACTERISTICS (General)

Built by	Rossi Navi
Year	2008 (0)
Length	55m/180' 4"
Beam	10m/32' 8"
Draft	3m/9' 10"
Classification	RINA
Flag	Marshall Islands
Hull colour	Light grey
Gross tonnage	736t
Net tonnage	221t
Displacement	tons 754t
Designer	Ing.Cusumano Alessandro
Naval Architect	Ing.Cusumano Alessandro
Interior Designer	Cristiano Gatto Design

CAPACITIES:

Speed	15.5 knots (approx)
Range	6000 nm (approx)@ 12 knots
Fuel capacity	33,814 US Gallons (128,000 Litres)
Water capacity	15,850 US Gallons (60,000 Litres)

3. MACHINERY

Engines	2 X 1640kw/2231Hp
Engine model	CAT 3516
Engine hours	Port: 4300hrs (19-sept-2017) Starboard: 4200hrs (19-sept-2017)
Fuel	DIESEL
Propulsion	PROP SHAFT
Gearboxes	ZF 7540, 3,960:1A With emergency pump Plumbed to the clean/dirty oil transfer system
Steering:	1260 dANm EL.HYDRAULIC STEERING GEAR TFCA 1400 HYDRAULIC RUDDER ACTUATOR
Stabilizers	Naiad mod.720 zero speed + under way Datum control system
Generators	
Generators	2x CAT C9, 160 kW 1x CAT C4, 93 kW Full service on generators every 500 hrs
Generator hours	Generator 1:1000hrs TOTAL REFIT 0 hours 2016
Generator 2:	1000hrs
Generator 3:	1159hrs (sept. 19, 2017)
Emerg. Generator	CAT C4.4 56.7KW/76HP - ≥100hrs
Electricity	
Electricity	CANTALUPI control system
Shore power	EXENDIS converter, 120KVA with auto switch over to Generators 1X ALTERNING CURRENT TRANSFORMER
Air Conditioning	
Condaria	240004 WM, R407C, 960,000 BTU Air conditioned control room in engine room
Other Machinery	
	Bow Thruster, Naiad system, 110 kW, 150 hp Water maker: 2 x 19.200 lt per day Sewage water treatment system: ECOMAR 24



Marcello Maggi Yachting Boutique

4. ACCOMMODATION

"RARITY" has accommodations for 12 Owners/Guests in 6 staterooms, comprised of a Master Suite, 1x VIP suite, 2x double cabin, and 2x twin cabins with Pullmans. The captain's cabin and 5 crew cabins on the lower deck for 11 crew.

5. GALLEY & LAUNDRY EQUIPMENT

1x Miele 5.6kW ovens 1x Miele stoves 11 kw
1 x Miele 3.3 kw ovens 1x Liebherr fridge
1x custom freezers 1x Miele fridge
2x Miele washing machines 2x Miele dryers

6. COMMUNICATIONS, NAVIGATION, ENTERTAINMENT

Communications Equipment:

All areas with high speed Wi-Fi & Internet connection

Entertainment Equipment:

Crestron control system
Cantalupi illumination system
1x Sat TV Seatel antennas
TV in all cabins

7. DECK EQUIPMENT

2 Hydraulic side ladder
Swimming area
1 Hydraulic central ladder
1 lateral wall

8. REFIT HISTORY

2016/2017:

- superstructure paint 2017
- Garage and engine room refit 2017
- Main generators complete overhaul 2016
- Main engines update & full service 2017
- Rina class 10 year 2017
- New shafts line bushes 2017
- New shafts line seal 2017
- New alignment of the shafts line 2017
- New Vulcan connections between gearbox and main engine 2017
- The propeller have been balanced 2017
- Water tanks, grey tank, black tank and bilge tank complete refit 2017
- Bulbous bow refit 2017
- Stretching of the swimming platform (1.5m more) 2017
- New ladder for swim 2017
- New sub water lights 2017
- All the bilges has been painted 2017
- All the interior and internal lights has been changed to led lights 2017
- Interiors almost completely refit 2016/17

9. COMMENTS

She has a powerful steel hull with aluminum superstructure and slender beam which easily allows her a conservative cruising speed of 15 knots, with an outstanding range of 6.000 nm at 12 knots.

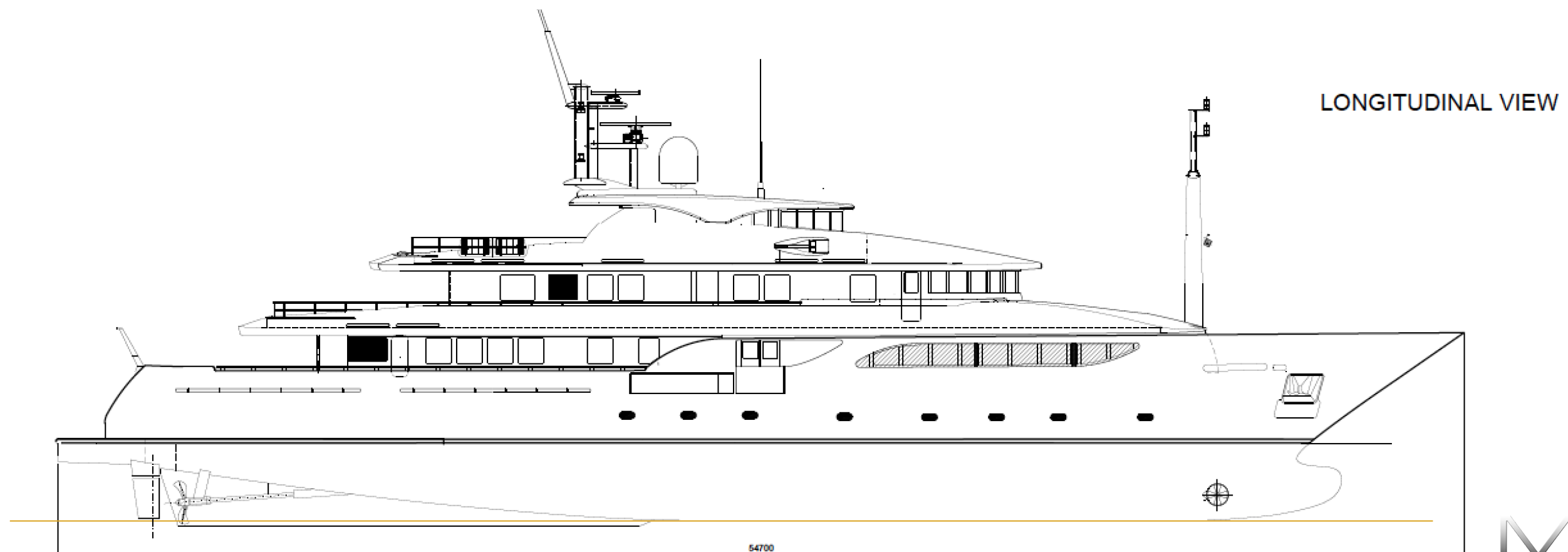
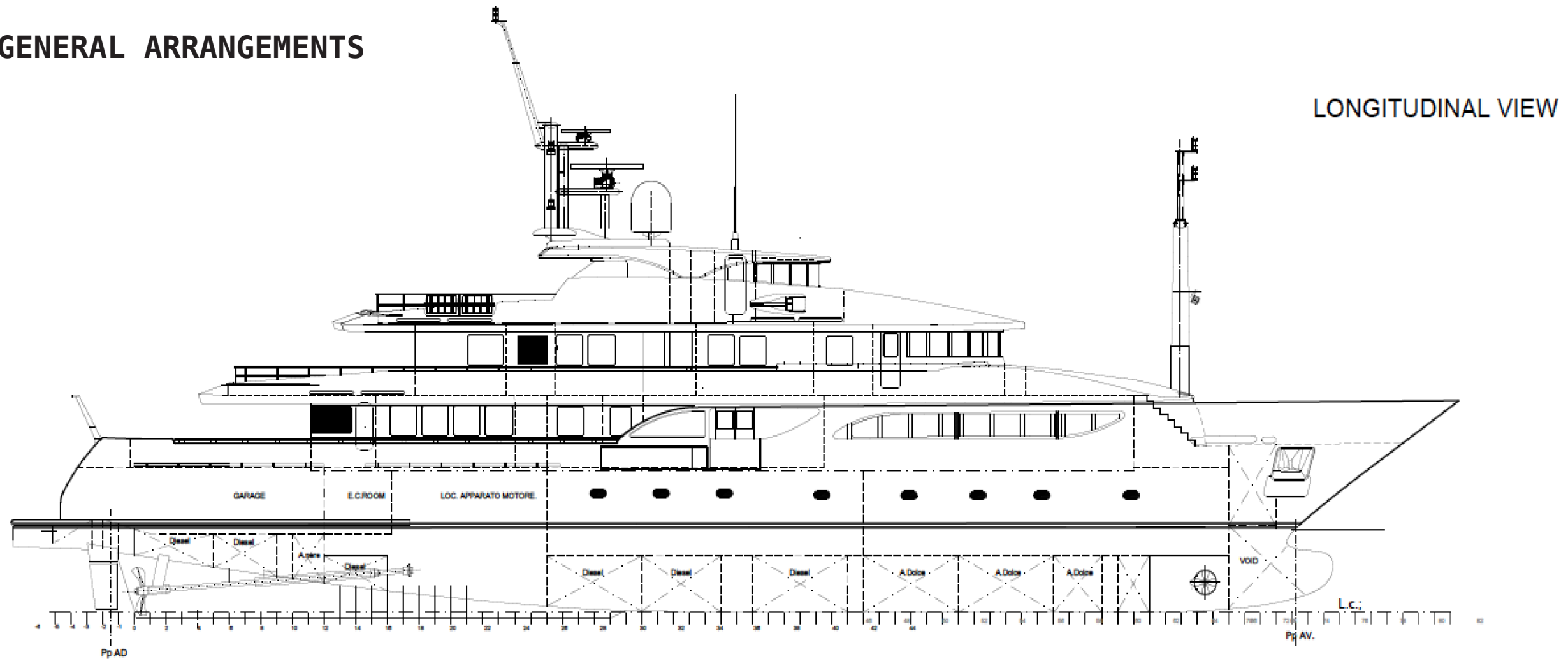
10. EXCLUSIONS

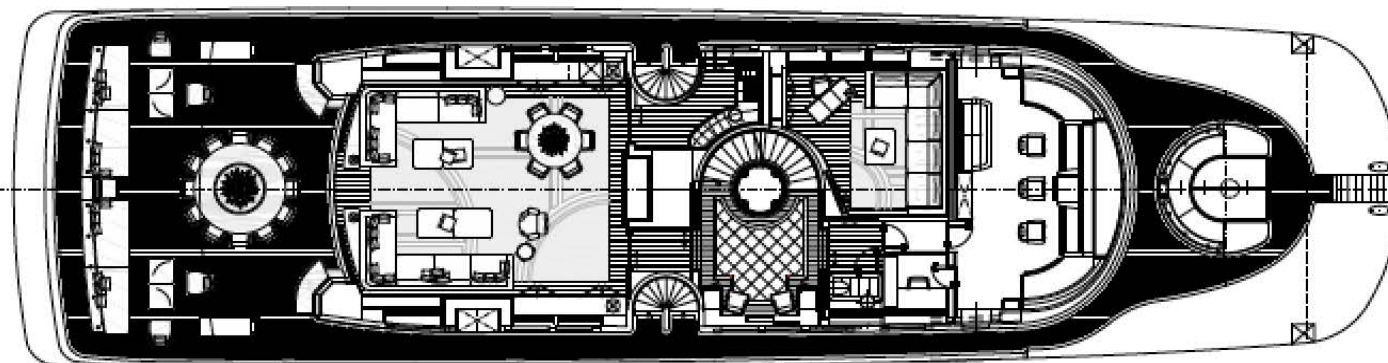
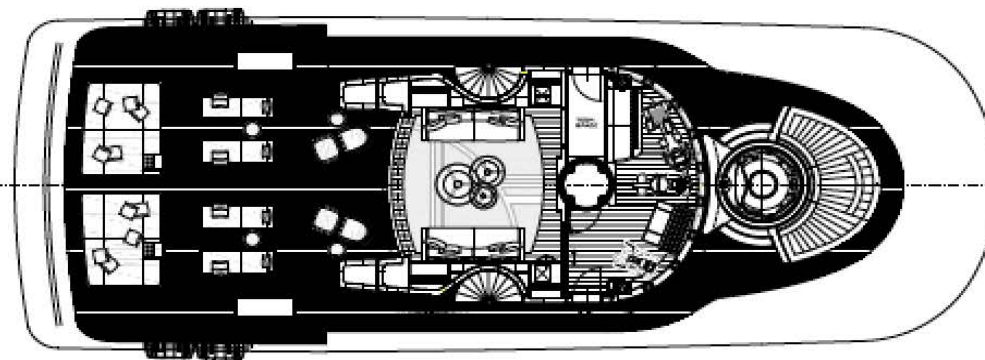
A complete list of exclusions is available upon request



Marcello Maggi Yachting Boutique

10. GENERAL ARRANGEMENTS





CRISTIANO GATTO
DESIGN TEAM

Piazza Gabbin 14 - 31022
Preganziol - TV - ITALIA
e-mail: info@cristianogattodesign.com
www.cristianogattodesign.com

tel: +39.0422.1782010
fax: +39.0422.1782003

Project: M.Y. Rarly - Refit

SCALE: 1:75

Plan: General Arrangement

Number: 169/03-755/16 M2
Cancel and Replace:

Purchaser: M.Y. Rarly

Draftsman: S.T.

Data: 04.07.2016 Note:

Controlled by: CRISTIANO GATTO

Data: 04.07.2016 Note:

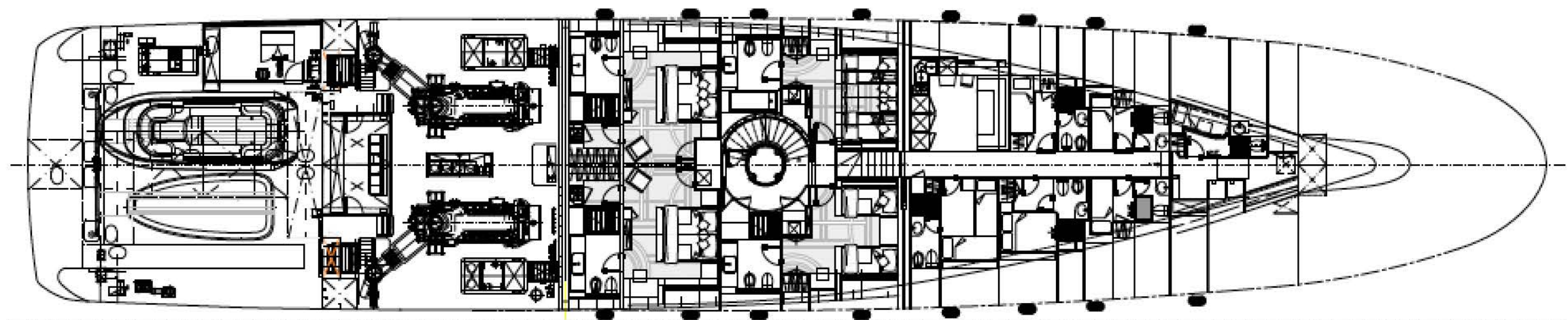
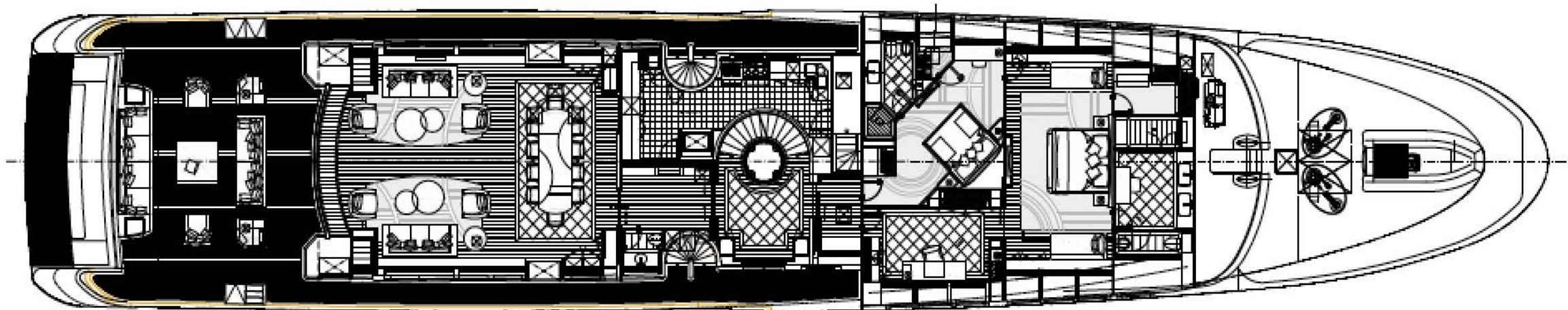
I Review: M.T.

Data: 31.10.2016 Note:

II Review: M.T.

Data: 17.11.2016 Note:

Tutti i diritti sono riservati al progettista CDD Team. Il presente disegno è di proprietà del progettista; esso non può essere divulgato, copiato o modificato senza l'autorizzazione scritta del progettista.
All rights reserved by CDD Team. This drawing is a property of the designer; it can not be divulged, copied or modified without prior written authorization of the designer.





INTERIOR'S ACCOMODATION

MMYB

Marcello Maai Yachting Boutique







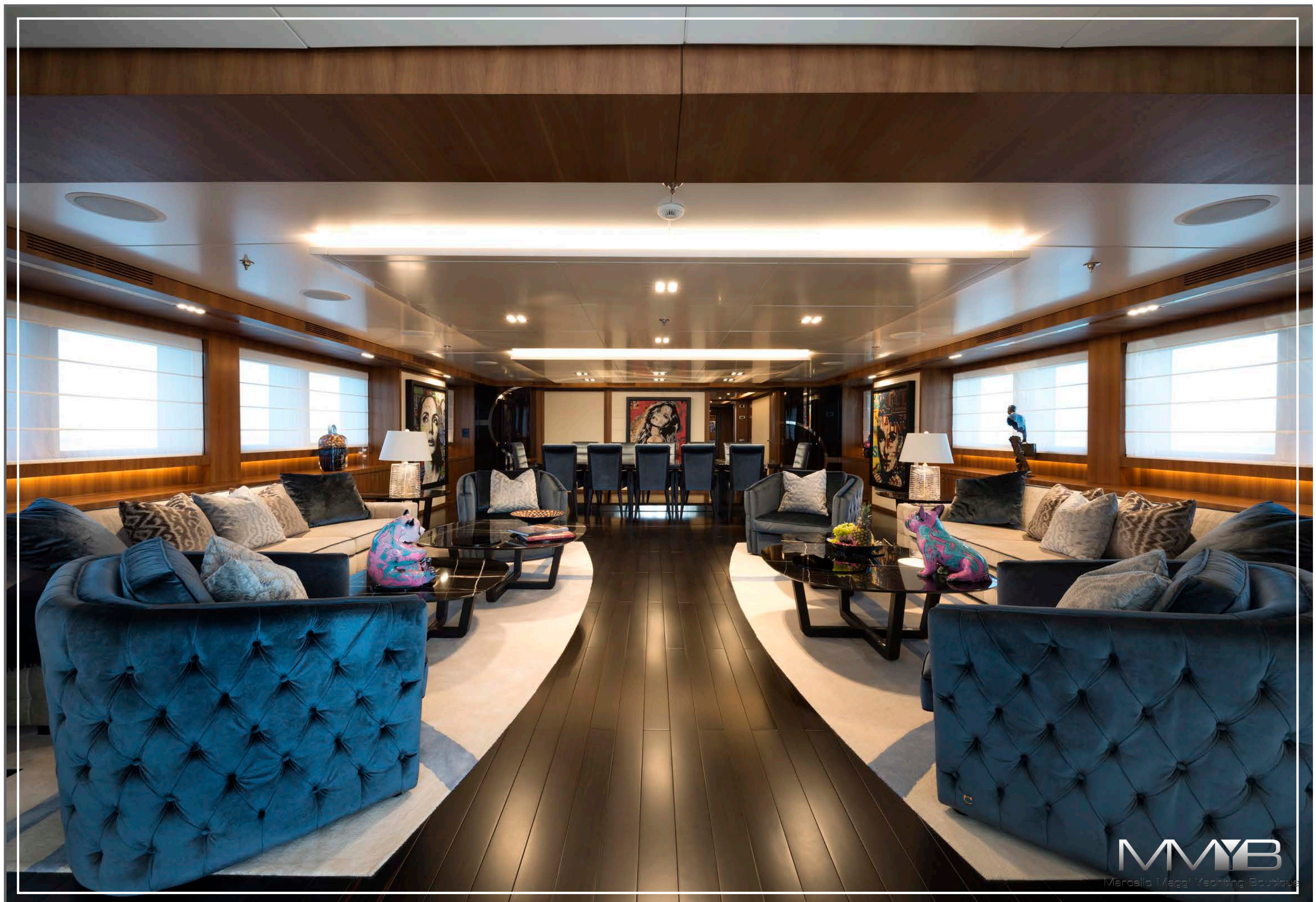
















An aerial photograph of a vast blue ocean. The water's surface is covered with numerous bright, star-like reflections of sunlight, creating a shimmering effect. The text "EXTERIOR'S ARRANGEMENTS" is centered over the image in a bold, sans-serif font. The word "EXTERIOR'S" is in black, while "ARRANGEMENTS" is in white with a black outline.

EXTERIOR'S ARRANGEMENTS

MMYB

Marcello Maggi Yachting Boutique



MMYB

Marcello Maggi Yachting Boutique















MMYB

Marcello Maggi Yachting Boutique



RARITY

The logo consists of the letters 'M', 'M', 'Y', and 'B' in a stylized, metallic, 3D font. The 'M's are connected, and the 'Y' and 'B' are also connected. The letters have a gradient from dark grey to light grey, giving them a metallic appearance.

Marcello Maggi Yachting Boutique

MARCELLO MAGGI SARL

Le Patio Palace, 41 Avenue Hector Otto

98000 Principaute De Monaco

☎+377643918312

✉mm@marcellomaggi.com

@www.marcellomaggi.com